



MEA-868-01-SMA

868 MHz ISM Connector Mount

Part #: 100-00201-01



Description

The MEA-868-01-SMA is a high efficient screw-mount ISM band antenna operating at 868MHz. The antenna is also offered for 433 MHz, 868MHz & 915MHz applications. This antenna was designed for LoRa & Sigfox IOT applications in mind. The high efficiency and high gain design provide the antenna consistent and stable connectivity. The antenna housing consists of black UV resistant plastic, IP 56 rated housing, and a SMA male connector. The small size and high performance make this antenna an ideal solution for any ISM type of applications.

Electrical Specification

Parameter	Specification
Frequency Range	863-870 MHz
Band	868 MHz
Return Loss	-8.6 dB
VSWR	2.1:1
Efficiency	75.5%
Peak Gain	2.5 dBi
Average Gain	-1.2 dB
Impedance	50 Ω
Polarization	Linear
Radiation Pattern	Omni-Directional
Max Input Power	25 W

Mechanical Specification

Parameter	Specification
Antenna Dimensions	9 x 9 x 48 mm
Operating Temperature	-40°C to + 85°C
Mounting Type	Connector Mount
Connector	SMA-Male Standard (Other Connectors Available)
Radome Type	TPE
Radome Color	Black
Substance Compliance	RoHS
Ingress Protection	IP56

*Mounted on Ground Plane of 95 x 40 mm

Features

- Small Form Factor
- High Performance
- Frequency range 868 MHz ISM (863-870 MHz)
- Antenna size D x H (9 x 48.0mm)
- RoHS Compliant
- Connector Type: SMA Male

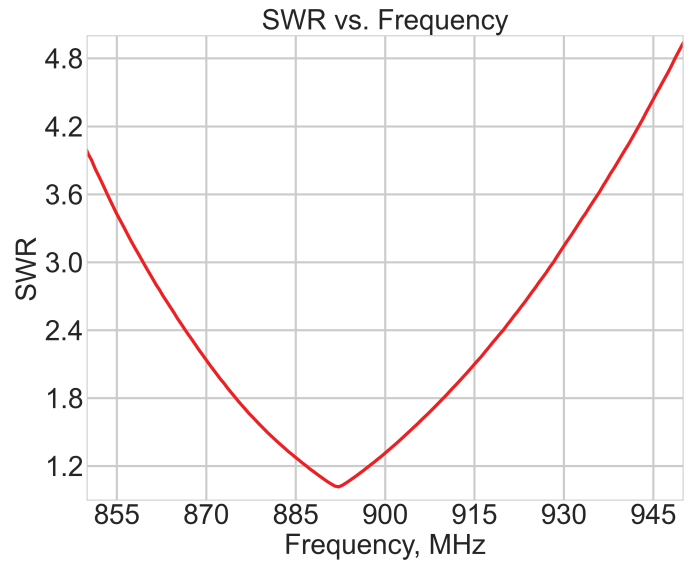
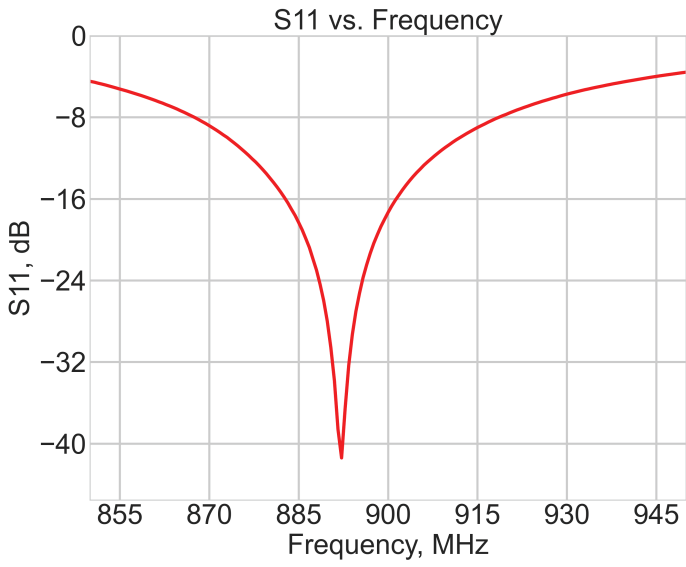
Applications

- Public safety
- M2M applications
- Wireless applications
- Smart meters
- Transportation
- Mesh networks.



Maxtena Inc.
 7361 Calhoun Place, Suite 102
 Rockville, MD 20855
 1-877-629-8362
 info@maxtena.com

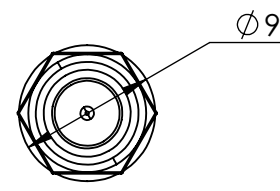
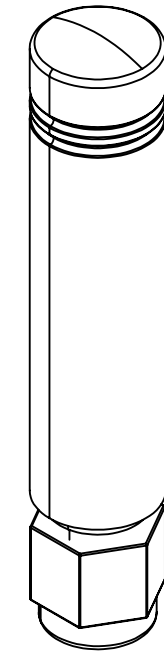
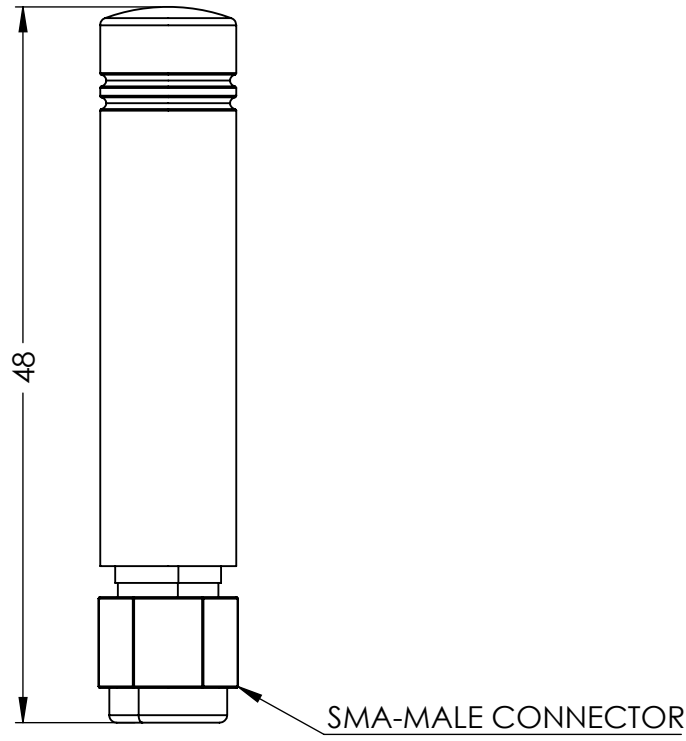
www.maxtena.com



Maxtena Inc.
 7361 Calhoun Place, Suite 102
 Rockville, MD 20855
 1-877-629-8362
 info@maxtena.com
www.maxtena.com

- NOTES:
 1. FREQUENCY: 863-870 MHz
 2. MOUNTING TYPE: CONNECTOR MOUNT
 3. MATERIALS:
 • RADOME: TPE
 • RADOME COLOR: BLACK
 4. OPERATING TEMPERTATURE: -40°C ~ +85°C
 5. STORAGE TEMPERTATURE: -40°C ~ +85°C

DRAWING REVISION HISTORY			
REV	DESCRIPTION	DATE	BY
A	INITIAL RELEASE	2021-10-01	JET



ITEM 100-00201 REVISION HISTORY			
REV	DESCRIPTION	DATE	BY
A	INITIAL RELEASE	2021-10-01	JET

100-00201 CONFIGURATION TABLE		
DASH NO	CONNECTOR TYPE	RADOME COLOR
-01	SMA-MALE	BLACK

UNLESS OTHERWISE SPECIFIED:
 DIMENSIONS ARE IN MM
 TOLERANCES:
 FRACTIONAL ±
 ANGULAR: MACH ± .5° BEND ±
 ONE PLACE DECIMAL ± 1.0
 TWO PLACE DECIMAL ± .50

	NAME	DATE
DRAWN	JET	2021-10-01
CHECKED	ZX	2021-10-01
ENG APPR.	NPC	2021-10-01
MFG APPR.		
	Q.A.	

INTERPRET GEOMETRIC TOLERANCING PER:

THIRD ANGLE PROJECTION

DO NOT SCALE DRAWING

CAD MAINTAINED. CHANGES SHALL BE INCORPORATED BY THE DESIGN ACTIVITY.

MAXTENA, INC

TITLE:
 100-00201
 MEA-868-01-SMA

SIZE B DWG. NO. 117-00519-01 REV A

CAGE CODE: 5KQH7 SCALE: NONE SHEET 1 OF 1