



MEAX-2690-CM

5G NR Connector Mount
Part #: 100-00205-01

Description

The MEA-2690-CM connector Mount Antenna is a 5G NR antenna solution, with high gain and efficiency ideal for maintaining constant global connectivity. The MEA-2690-CM covers all 5G, 4G, 3G and 2G frequencies. This is an ideal antenna for telematics systems, remote surveillance, asset tracking and any IOT system applications. The high performance and low profile make this antenna ideal for the most challenging installations.

This connector mount antenna is easy to install with maximum durability.



Electrical Specification

Parameter	Specification	
Frequency Range	617-960 MHz	1525-2690 MHz
Band	600, 700, 850, 900 MHz	1600, 1700, 1800, 1900, 2000, 2100, 2300, 2500, 2600 MHz
Return Loss	-11.7 dB	-10.8 dB
VSWR	1.9:1	1.9:1
Efficiency	52%	60%
Peak Gain	0.5 dBi	2.0 dBi
Average Gain	-2.9 dB	-2.3 dB
Impedance	50 Ω	
Polarization	Linear	
Radiation Pattern	Omni-Directional	
Max. Input Power	25 W	

Features

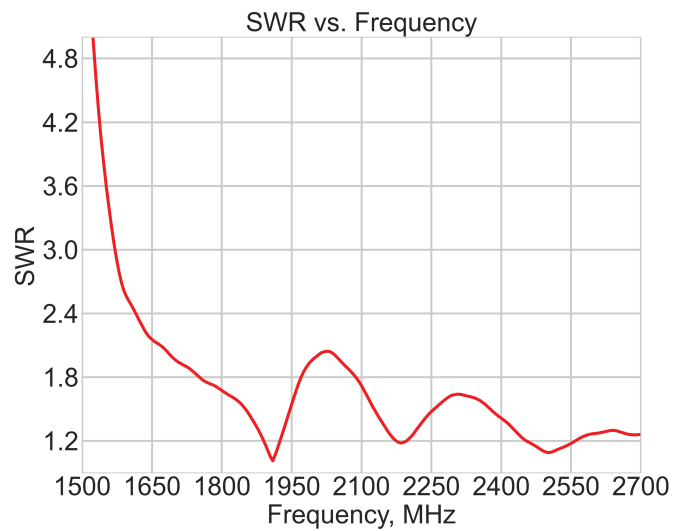
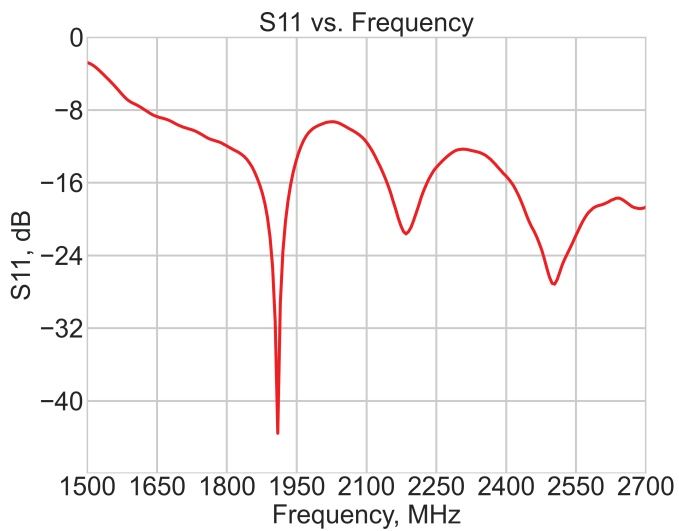
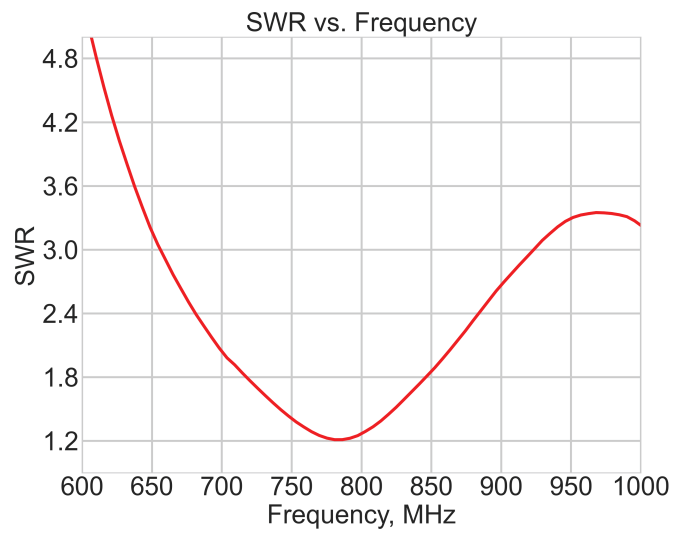
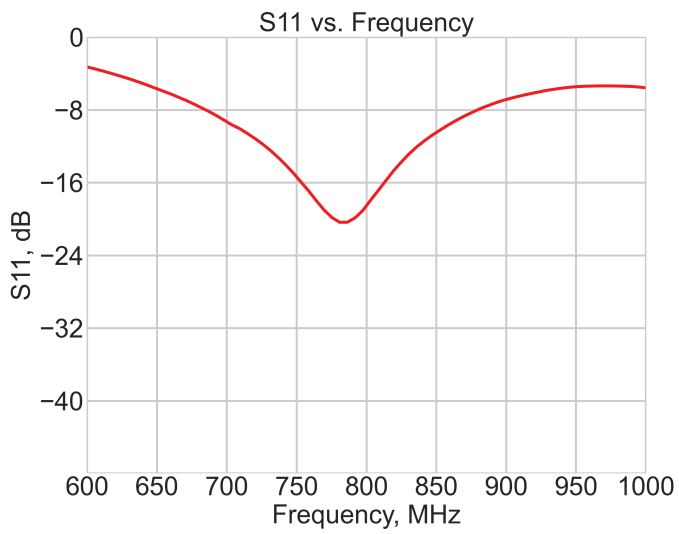
- 5G NR frequency range (617-960 MHz - 1525-2690 MHz)
- Easy mounting: Connector Mount
- N-Male Standard
- Ground Plane Independent
- Dimensions 232 × Ø 20 (Ø 16) mm

Applications

- Asset Tracking
- Telematics
- Container & Logistics
- Automotive
- Industrial Applications
- IOT Applications

Mechanical Specification

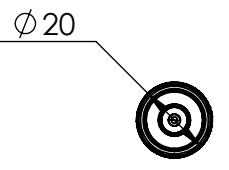
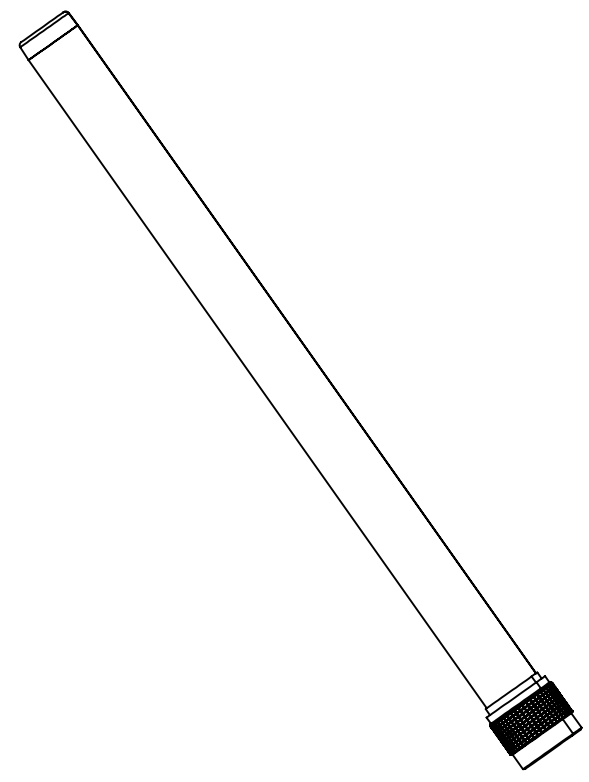
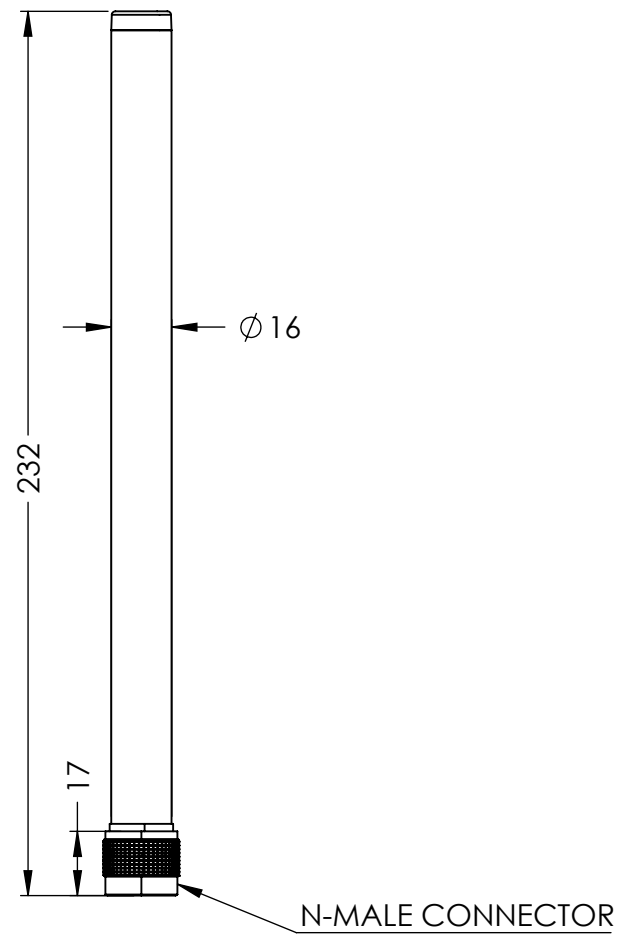
Parameter	Specification
Antenna Dimensions	Ø 20 (Ø 16) × 232 mm
Operating Temperature	-40°C to + 85°C
Mounting Type	Connector Mount
Connector	N-Male
Radome	ASA
Radome color	Black or White
Substance Compliance	RoHS



NOTES:

- 1. FREQUENCY: 617-960 MHz, 1525-2690 MHz
- 2. MOUNTING TYPE: CONNECTOR MOUNT
- 3. MATERIALS:
 - RADOME: ASA
 - RADOME COLOR: BLACK or WHITE
- 4. OPERATING TEMPERTATURE: -40°C ~ +85°C
- 5. STORAGE TEMPERTATURE: -40°C ~ +85°C

DRAWING REVISION HISTORY			
REV	DESCRIPTION	DATE	BY
A	INITIAL RELEASE	2021-10-01	JET



ITEM 100-00205 REVISION HISTORY			
REV	DESCRIPTION	DATE	BY
A	INITIAL RELEASE	2021-10-01	JET

100-00205 CONFIGURATION TABLE		
DASH NO	CONNECTOR TYPE	RADOME COLOR
-01	N-MALE	BLACK

UNLESS OTHERWISE SPECIFIED:

DIMENSIONS ARE IN MM
 TOLERANCES:
 FRACTIONAL ±
 ANGULAR: MACH ± .5° BEND ±
 ONE PLACE DECIMAL ± 1.0
 TWO PLACE DECIMAL ± .50

INTERPRET GEOMETRIC TOLERANCING PER:

THIRD ANGLE PROJECTION

DO NOT SCALE DRAWING

	NAME	DATE
DRAWN	JET	2021-10-01
CHECKED	ZX	2021-10-01
ENG APPR.	NPC	2021-10-01
MFG APPR.		
Q.A.		

CAD MAINTAINED. CHANGES SHALL BE INCORPORATED BY THE DESIGN ACTIVITY.

MAXTENA, INC

TITLE: 100-00205 MEA-2690-CM

SIZE: B DWG. NO. 117-00524-01 REV A

CAGE CODE: 5KQH7 SCALE: NONE SHEET 1 OF 1