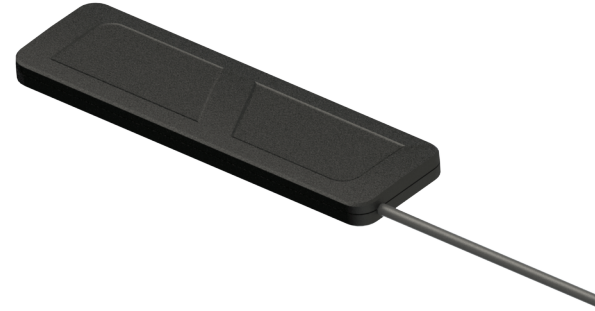


ME A-UWB-01-AM

LOW PROFILE LTE ANTENNA

Part #: 100-00106-01



Description

The MEA-UWB-01-AM is a high efficiency cellular wide band LTE antenna for use with all 2G/3G and 4G LTE frequencies. This antenna was designed for automotive, IOT, and telematics communication. The antenna's advanced technology ensures constant reception and transmission. The back side of the antenna contains a foam adhesive for easy, reliable mounting. The antenna is waterproof and rated IP67. It is available with an SMA, FAKRA or customer specified connector and cable length.

Features

- 2G/3G/4G Ultra-Wideband Automotive Antenna
- Low profile for easy installation
- Small size: 105.1mm x 30.1mm x 6.7mm
- Fully customizable cable length and connector
- ROHS Compliant

Applications

- Automotive
- Fleet tracking
- IOT
- Telematics

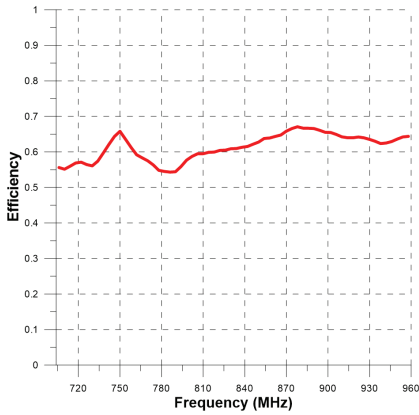
LTE Antenna Electrical Specifications	
Frequency Range (MHz)	698~960 MHz 710~2170 MHz 2300~2700 MHz
VSWR	698~960 < 3.5 1710~2170 < 2.5 2300~2700 < 2.5
Impedance	50 Ω
Peak Gain	3.8 dBi Typ. @698~960 MHz 2.9 dBi Typ. @1710~2170 MHz 4.4 dBi Typ. @2300~2700 MHz
Average Efficiency	698~960 MHz ≥ 35% 1710~2170 MHz ≥ 40% 2300~2700 MHz ≥ 35%

Mechanical Specifications	
Antenna Dimensions (mm)	105.1 x 30.1 x 6.7 mm
Mounting Function	Foam Adhesive
Operating Temperature	-40 °C +85 °C
Housing Material & Color	PC+ABS & Black
Cable	RG-174
Cable Length	1 Meter or customer specification
Connector	SMA / FAKRA or customer specification
Waterproof	IP67

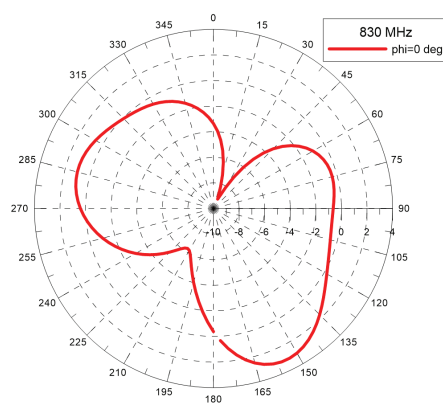
Radiation Specifications

698~960 MHz

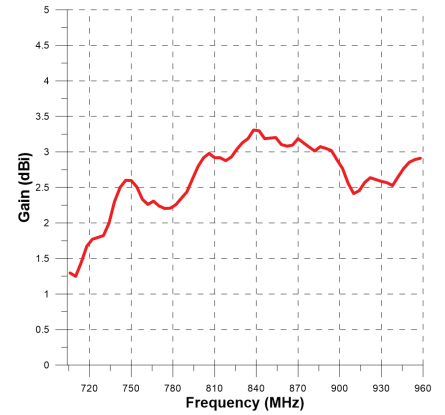
Efficiency vs. Frequency



Etotal vs. Theta



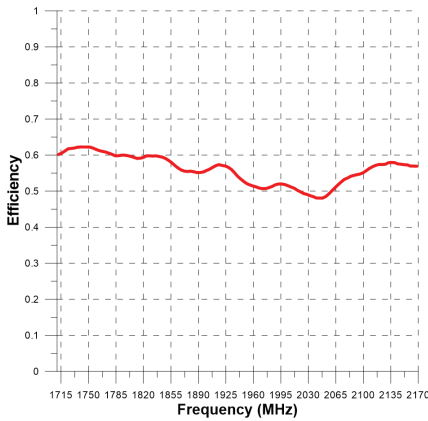
Gain vs. Frequency



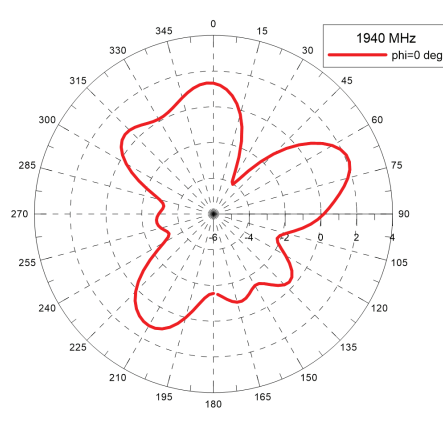
Radiation Specifications

1710~2170 MHz

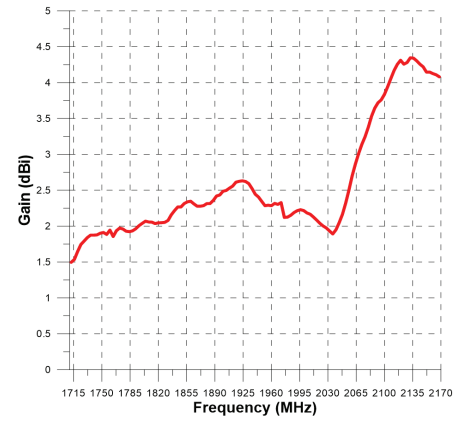
Efficiency vs. Frequency



Etotal vs. Theta



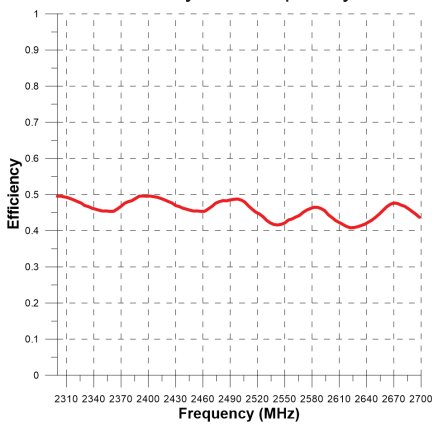
Gain vs. Frequency



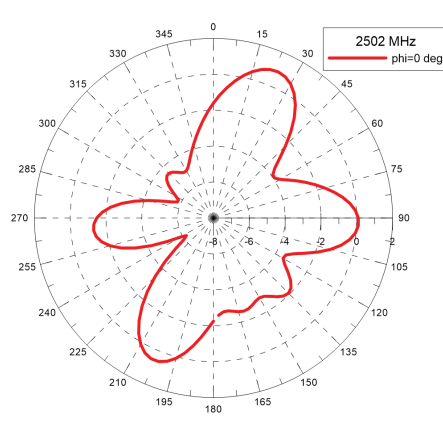
Radiation Specifications

2300~2700 MHz

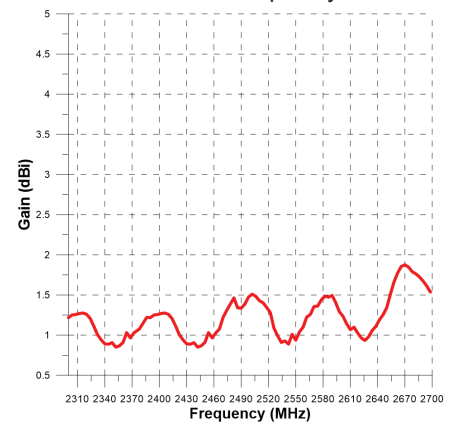
Efficiency vs. Frequency



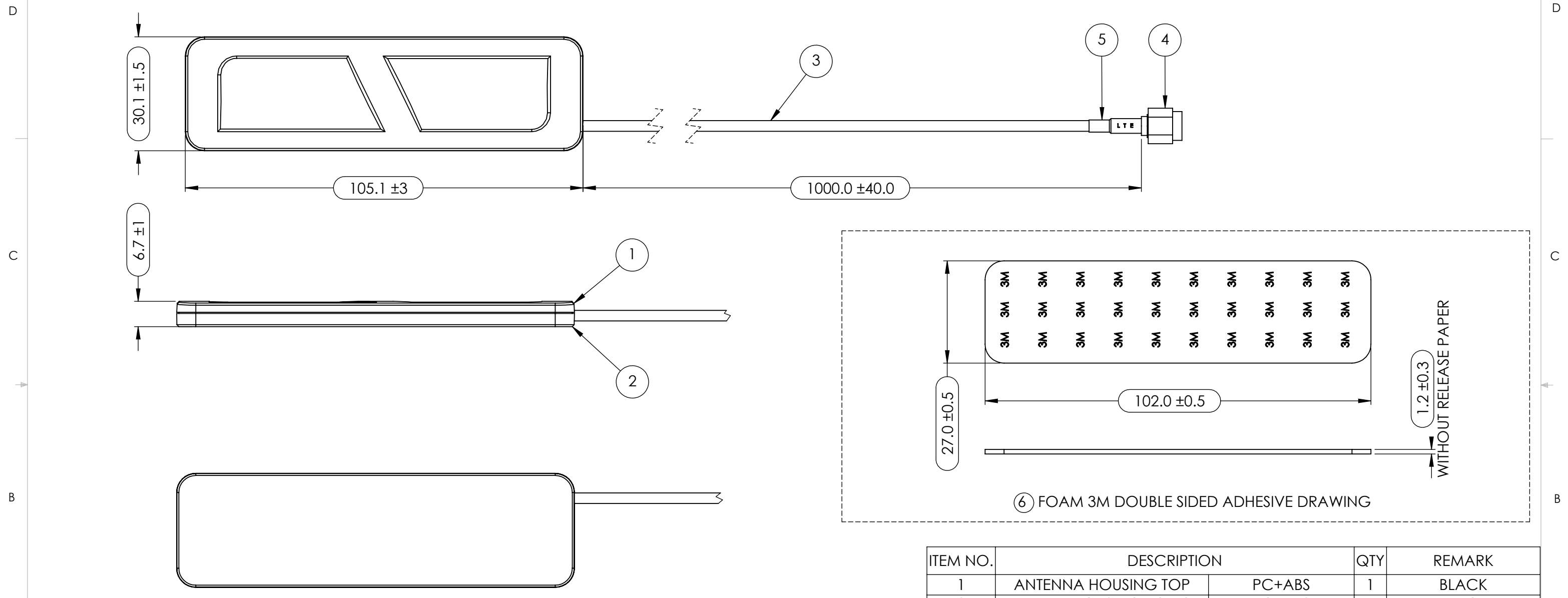
Etotal vs. Theta



Gain vs. Frequency



DRAWING REVISION HISTORY			
REV	DESCRIPTION	DATE	BY
1	INITIAL RELEASE	2019-06-26	ZX



NOTES:
CRITICAL DIMENSIONS ARE MARK WITH (DIM).

ITEM NO.	DESCRIPTION	QTY	REMARK
1	ANTENNA HOUSING TOP	1	BLACK
2	ANTENNA HOUSING BOTTOM	1	BLACK
3	CABLE	1	BLACK
4	CONNECTOR	1	GOLD PLATED
5	H.S TUBE(RG-174)	1	RED TUBE/WHITE TEXT
6	BLACK FOAM ADHESIVE	1	WHITE LINER

ITEM 100-00106-01 REVISION HISTORY			
REV	DESCRIPTION	DATE	BY
1	INITIAL RELEASE	2019-06-26	ZX

UNLESS OTHERWISE SPECIFIED:		NAME	DATE	MAXTENA, INC TITLE: 100-00106-01 MEA-UWB-01-AM
DIMENSIONS ARE IN MM		DRAWN	ZX 2019-06-26	
TOLERANCES:		CHECKED		
FRACTIONAL ±		ENG APPR.	NPC 2019-06-26	
ANGULAR: MACH ± .5° BEND ±		MFG APPR.		SIZE DWG. NO. REV B 117-00287-01 1
ONE PLACE DECIMAL ± .2		Q.A.		
TWO PLACE DECIMAL ± .10		CAD MAINTAINED. CHANGES SHALL BE INCORPORATED BY THE DESIGN ACTIVITY.		
INTERPRET GEOMETRIC TOLERANCING PER:		CAGE CODE: 5KQH7		SCALE: NONE
THIRD ANGLE PROJECTION DO NOT SCALE DRAWING		SHEET 1 OF 1		