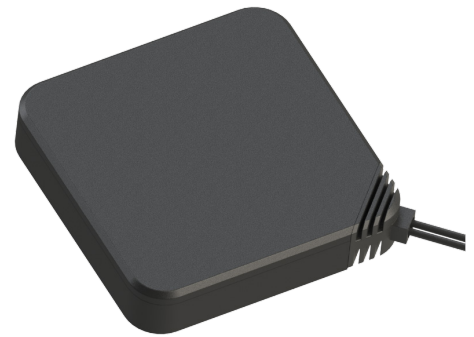




MEA-698-2700-AM

OMNI-DIRECTIONAL LTE ANTENNA

Part #: 100-00143-01



Description

The MEA-698-2700-AM is a dual-port multiband omnidirectional LTE antenna. This antenna is designed for 4G LTE covering 698-2700 MHz. The MEA-698-2700-AM is an ultra-low profile rugged antenna used for a variety of cellular LTE applications. The antenna features custom cable length and connectors options. This is an ideal antenna for many IoT installations.

Electrical Specifications

Parameter	Specification
Frequency Range	698-2700 MHz
Impedance	50 Ω
VSWR	≤ 2.0
Gain	4.5 dBi
Radiation	Omnidirectional
Polarization	Vertical

Mechanical Specifications

Parameter	Specification
Antenna Dimensions	101.5 x 77.6 x 15.8 mm
Operating Temperature	- 40 °C to + 80 °C
Antenna Radome Material	PC + PBT
Connector	SMA Male (or other)
Antenna Color	Black

Features

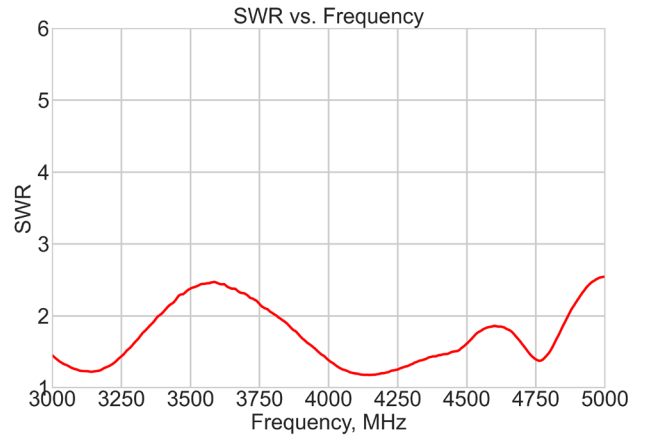
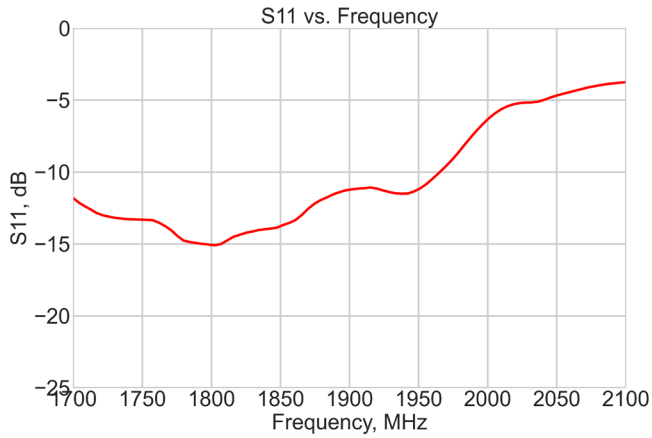
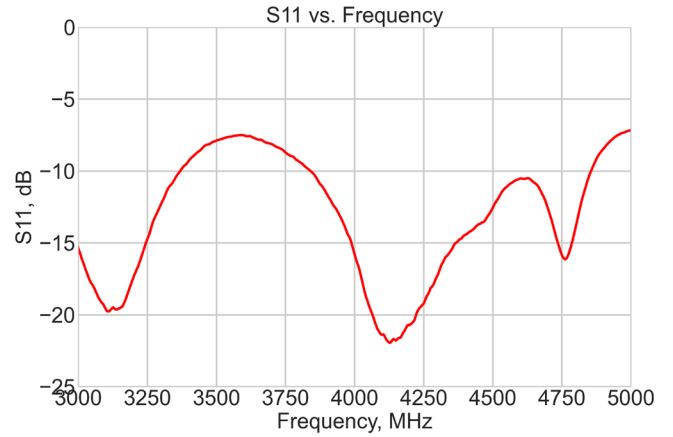
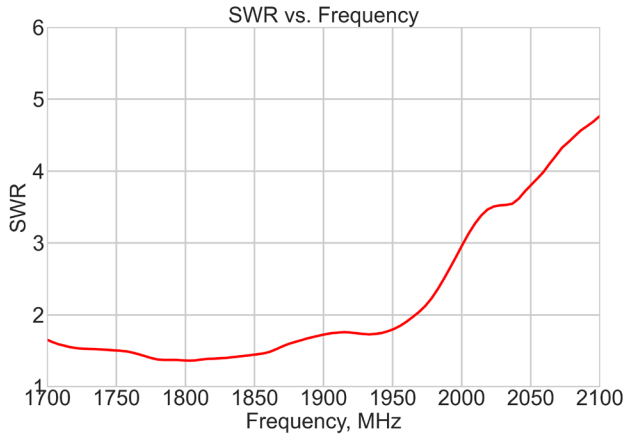
- Dual-Port Multiband
- Omni-Directional LTE Antenna
- Covers Frequencies: 698 - 2700 MHz
- Low Profile
- Rugged Design

Applications

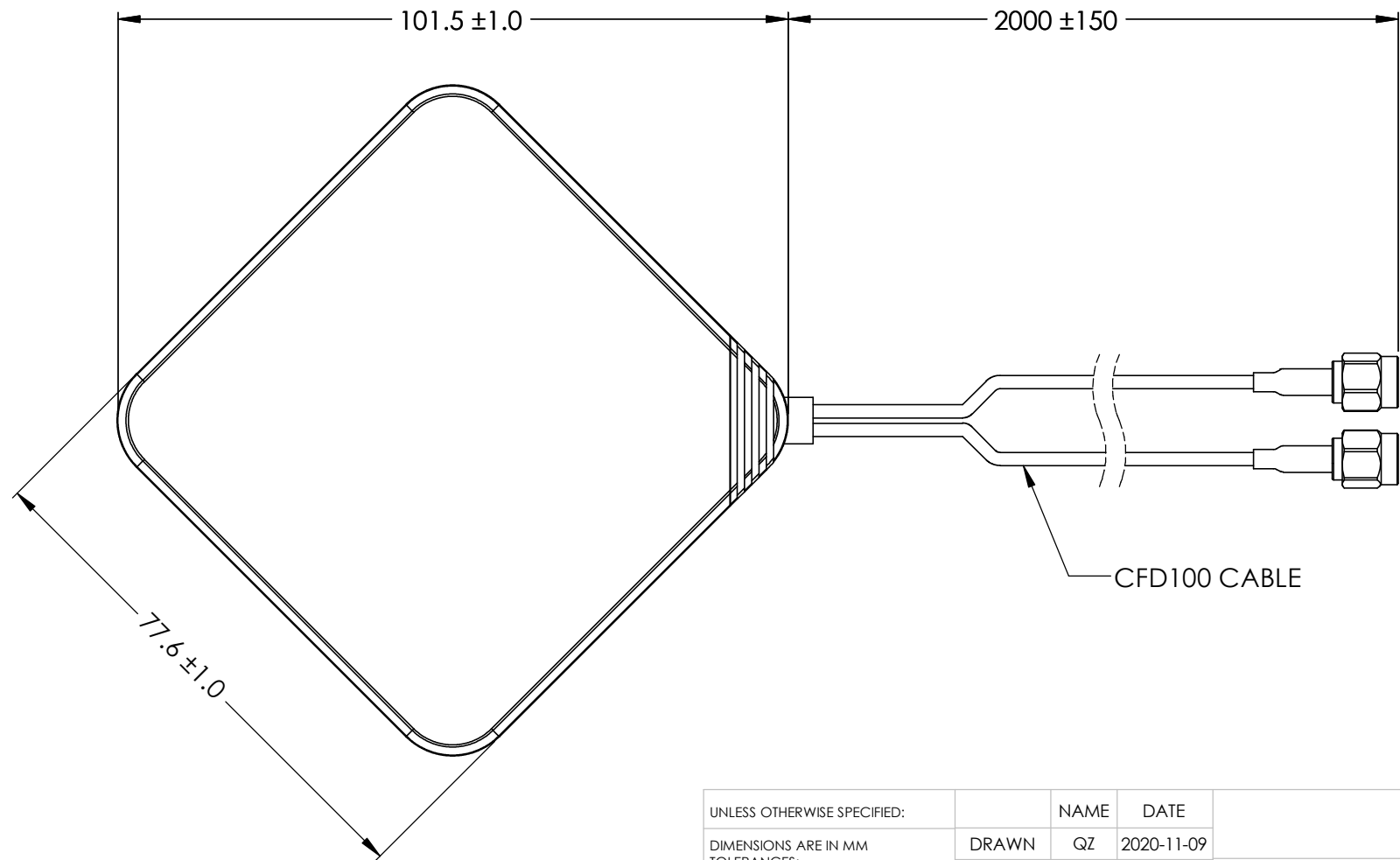
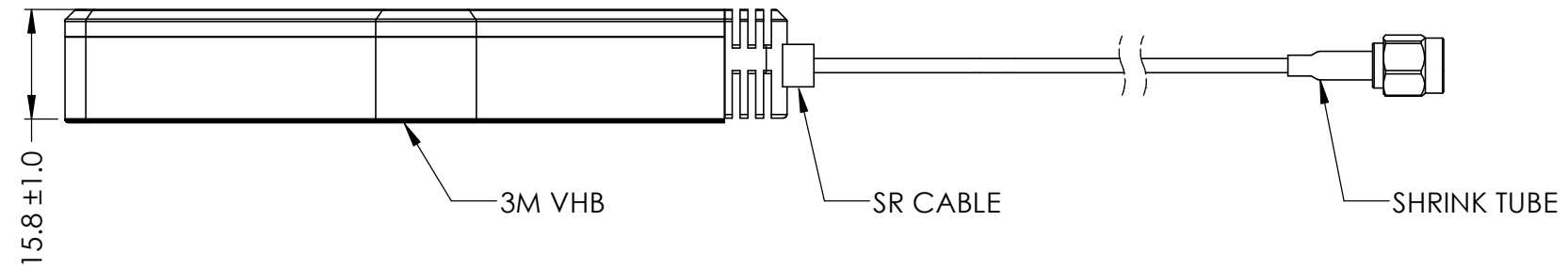
- Cellular, LTE, and WiMax Applications
- Modems, Routers, and Gateways
- Security
- Asset Tracking
- IoT

Radiation Specifications

698-2700 MHz



DRAWING REVISION HISTORY			
REV	DESCRIPTION	DATE	BY
A	INITIAL RELEASE	2020-11-09	QZ



NOTES:

1. FREQUENCY: 698-2700MHZ
2. V.S.W.R: ≤ 2.0
3. GAIN: 4.5DBI
4. IMPEDONCE: 50Ω
5. POLARIZATION: VERTICAL
6. RADIATION: OMNI
7. CONNECTOR: SMA-MALE
8. TEMPERATURE: -40°C TO +70°C

ITEM 100-00143-01 REVISION HISTORY			
REV	DESCRIPTION	DATE	BY
A	INITIAL RELEASE	2020-11-09	QZ

PROPRIETARY AND CONFIDENTIAL

THE INFORMATION CONTAINED IN THIS DRAWING IS THE SOLE PROPERTY OF MAXTENA, INC. ANY REPRODUCTION IN PART OR AS A WHOLE WITHOUT THE WRITTEN PERMISSION OF MAXTENA, INC IS PROHIBITED.

UNLESS OTHERWISE SPECIFIED:	NAME	DATE
DIMENSIONS ARE IN MM	DRAWN	QZ 2020-11-09
TOLERANCES:	CHECKED	ZX 2020-11-10
FRACTIONAL ±	ENG APPR.	NPC 2020-11-12
ANGULAR: MACH ± .5° BEND ±	MFG APPR.	
ONE PLACE DECIMAL ± 1.0	Q.A.	
TWO PLACE DECIMAL ± .50		
INTERPRET GEOMETRIC TOLERANCING PER:	CAD MAINTAINED. CHANGES SHALL BE INCORPORATED BY THE DESIGN ACTIVITY.	
	DO NOT SCALE DRAWING	

MAXTENA, INC		
TITLE:		
100-00143-01		
MEA-698-2700-SMA		
SIZE	DWG. NO.	REV
B	117-00362-01	A
CAGE CODE: 5KQH7	SCALE: NONE	SHEET 1 OF 1